

Mermessus trilobatus (Emerton, 1882)

Family Linyphiidae

Body length ♀ 1.5-2.0mm ♂ 1.5-2.0mm

This species is not illustrated or described in *Britain's Spiders* (2nd edition)

Habitat and Ecology

Mermessus trilobatus is a North American species first recorded in Europe in Germany in the 1970s. It has spread widely in Europe since then with the first British record in 2007. It occurs on or close to the ground layer in a wide variety of habitats including grassland, woodland, gardens, brownfield sites and sand dunes. Adults of both sexes have been found throughout the year with a peak in midsummer.

Status

The species appears well established with records from many southern counties and East Anglia.

Special identification features

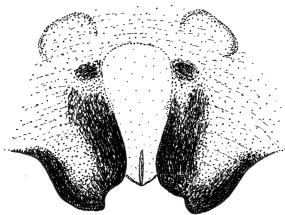
The tibial dorsal spine formula is 2-2-2-1. There is no TmIV and the TmI ratio is 0.4-0.49. The epigyne is often obscured by a large plug after mating has taken place. The image below is of an unplugged epigyne. The lateral lobes of the epigyne protrude from the abdominal surface.

This text was derived from various sources at the time of compilation.

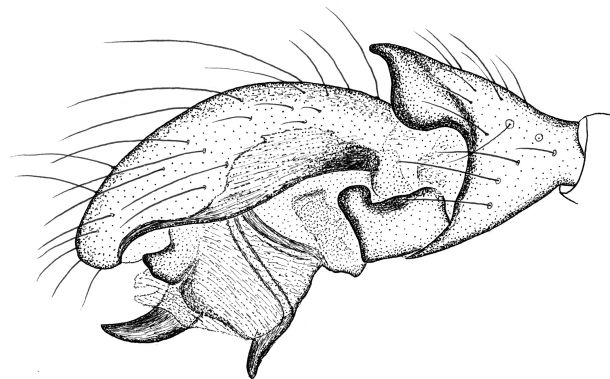
For the latest distribution maps, references quoted and any updated text please check the SRS website.

<https://srs.britishspiders.org.uk/portal.php/p/Summary/s/Mermessus+trilobatus>

Female epigyne



Male palp



The illustrations of the female epigyne and male palp are reproduced from original drawings by Richard Gallon.

This page is best placed in Michael Roberts (Harley Books) Volume 2 on p. 102