

# *Uloborus plumipes* Lucas, 1846

## Family Uloboridae

**Body length** ♀ 4.0-6.0mm ♂ 3.0-4.0mm

**Illustrated in *Britain's Spiders* (2nd edition) on p. 157**

### Habitat and Ecology

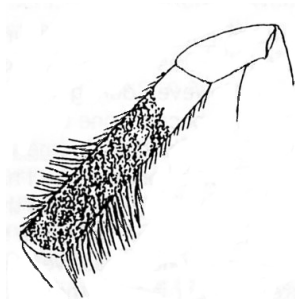
*Uloborus plumipes* has been imported into Britain probably on pot plants from the Netherlands. It is found in garden centres and hothouses where it spins an orb web of cribellate silk. Females have been recorded throughout the year.

### Status

The species appears well established in buildings where the temperature remains well above freezing, with widespread records from England, Wales and Scotland.

### Special identification features

Female *Uloborus plumipes* are easily identified by the patch of long feathery hairs on tibia I (see below). The spider's cream to brown egg sac is shaped like a holly leaf. When examining males, *U. plumipes* do not have long pale hairs on the tubercle at the base of the palpal femur whereas *U. walckenaerius* do.

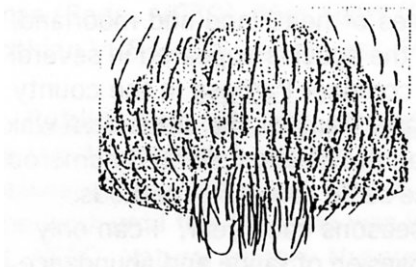


This text was derived from various sources at the time of compilation.

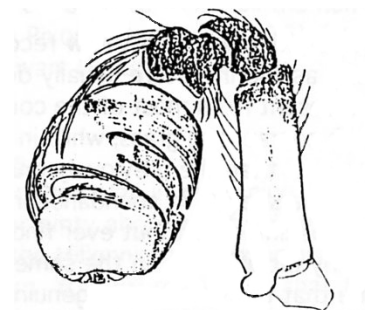
For the latest distribution maps, references quoted and any updated text please check the SRS website.

<https://srs.britishtspiders.org.uk/portal.php/p/Summary/s/Uloborus+plumipes>

Female epigyne



Male palp



The illustrations of the female epigyne, male palp and female tibia are reproduced from original drawings by Michael Roberts.

This page is best placed in Michael Roberts (Harley Books) Volume 1 on p. 56