

# *Zodarion fuscum* (Simon, 1870)

## Family Zodariidae

**Body length** ♀ 3.0-4.0mm ♂ 2.0-3.5mm

**Illustrated in *Britain's Spiders* (2nd edition) on p. 336**

### Habitat and Ecology

All species in this family are ant mimics. They not only occur with ants, but feed on them exclusively. Like other members of the genus, this species favours sparsely vegetated areas with stony or gravelly substrates in open sunny sites. Brownfield sites will often offer ideal conditions but are at risk from redevelopment.

### Status

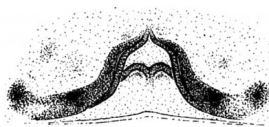
Since first being recorded near Swindon in 1997, this species has been found in a few other sites in southern and central England and south Wales.

This text was derived from various sources at the time of compilation.

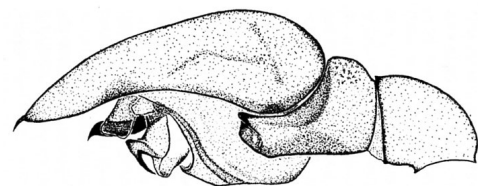
For the latest distribution maps, references quoted and any updated text please check the SRS website.

<https://srs.britishspiders.org.uk/portal.php/p/Summary/s/Zodarion+fuscum>

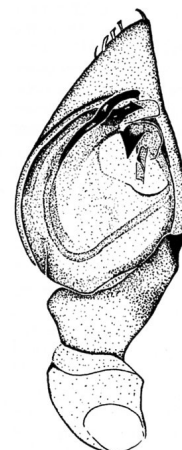
Female epigyne



Male palp



lateral



ventral

The illustrations of the female epigyne and male palp are reproduced from original drawings by Martin Askins.

This page is best placed in Michael Roberts (Harley Books) Volume 2 on p. 172