

## Note on *Dendryphantes mordax* (C. L. Koch, 1846) (Araneae, Salticidae)

María Elena Galiano

Consejo Nacional de Investigaciones  
Científicas y Técnicas,  
Av. Angel Gallardo 470,  
1405 Buenos Aires,  
R. Argentina

### Summary

*Phiale jucunda* (C. L. Koch, 1846) is newly synonymized with *Dendryphantes mordax* (C. L. Koch, 1846). The species is redescribed and new records are given.

### Introduction

Through the courtesy of Dr M. Moritz of the Museum für Naturkunde, Humboldt Universität, Berlin, I have recently had the opportunity of examining the type specimens of *Hyllus mordax* C. L. Koch, 1846 and *Evophrys jucunda* C. L. Koch, 1846. This study has led me to conclude that the two names are synonyms. *Evophrys jucunda* was placed by Koch in his subgenus *Freya* and transferred to *Phiale* by Simon (1903: 701). On the other hand, *Hyllus mordax* was transferred to the genus *Dendryphantes* by Simon (1901: 618). The species belongs to the Dendryphanteae group and in spite of the fact that the limits of the genera of this group are not well defined, I think that the species is correctly placed in *Dendryphantes*, at least until the South American species of this genus are revised. The valid name for the species is *Dendryphantes mordax* by page priority, and *Evophrys jucunda* is newly synonymized.

### *Dendryphantes mordax* (C. L. Koch, 1846) (Figs. 1-6)

*Hyllus mordax* C. L. Koch, 1846, p. 165, t.cccclix f.1219 (♂ sp.n.); 1851, p. 46.

*Dendryphantes mordax* Simon, 1901, p. 618. Petrunkevitch, 1911, p. 636. Bonnet, 1956, p. 1396. Roewer, 1954, p. 1197.

*Evophrys jucunda* C. L. Koch, 1846, p. 205, t.cccclxv f.1252 (♀ sp.n.) NEW SYNONYMY.

*Evophrys (Freya) jucunda* C. L. Koch, 1851, p. 66.

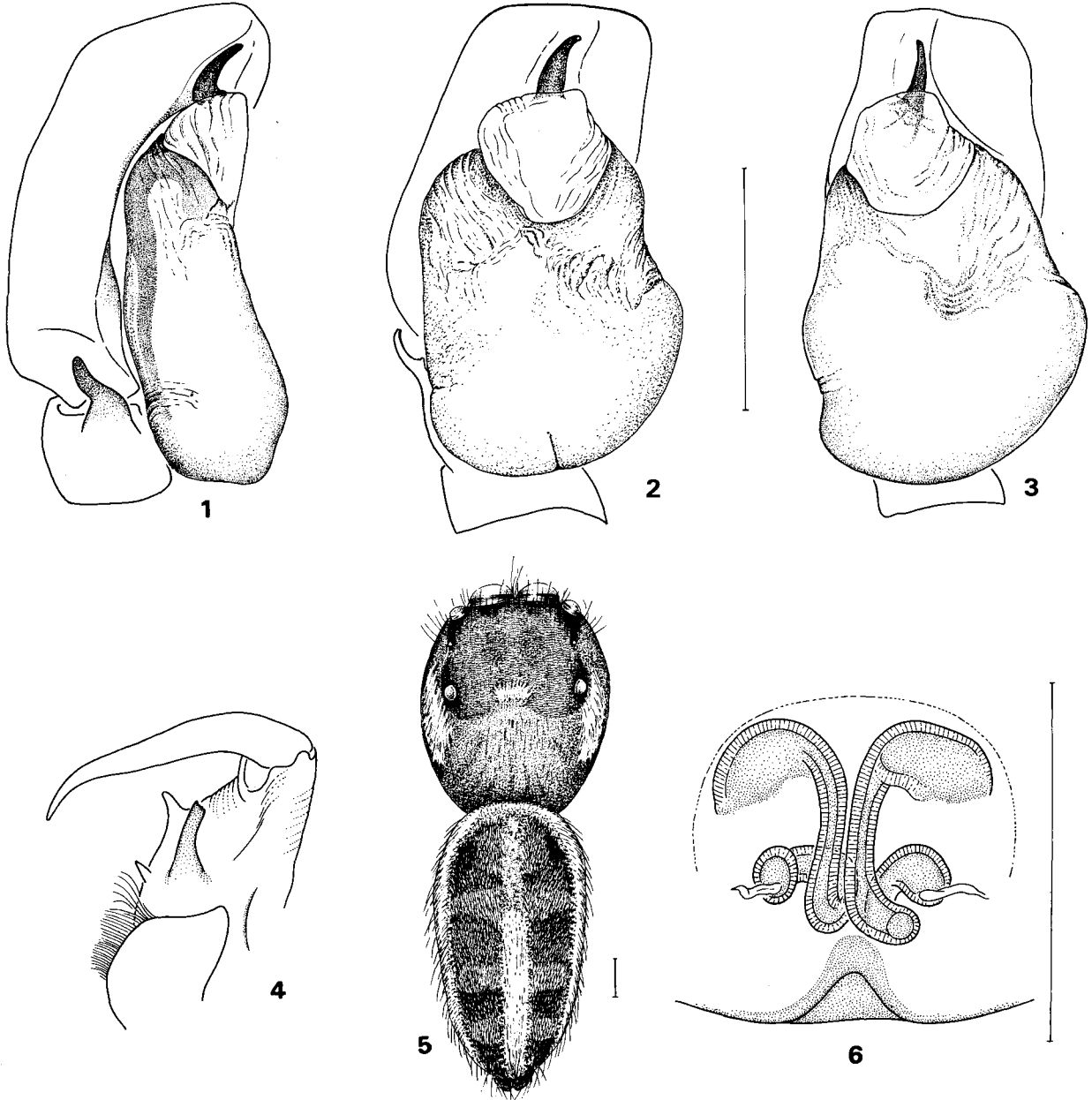
*Phiale jucunda* Simon, 1903, p. 701, 702, 707. Petrunke-

vitch, 1911, p. 691. Mello-Leitão, 1944, p. 320. Bonnet, 1958, p. 3507. Roewer, 1954, p. 1060.

### *Holotype male. Redescription* (Figs. 1-4)

*Total length*: 5 mm. *Carapace*: 2.60 mm long, 2.17 mm wide, 1.13 mm high. *Ocular quadrangle*: 1.03 mm long, first row 1.57 mm wide, third row 1.77 mm wide. Small eyes of second row a little closer to ALE than to PLE. Diameter of AME 0.53 mm. *Chelicerae* (Fig. 4): strong, diverging in distal half. Fang groove deeply excavated, transversely rugulose. Promargin with a low blunt tubercle near base of fang and two teeth, one in the middle and the other on the angle. Retromargin with a single robust tooth which is truncated at the distal end. *Maxillae*: outer distal corner with a robust tubercle which turns distally. *Legs*: 1423. *Spines*: I: femur dorsal 1-1-1, prolateral distal 2; patella 0; tibia ventral 2-2-2; metatarsus ventral 2-2. II: femur dorsal 1-1-1, prolateral distal 2; patella 0; tibia ventral 1r-2; metatarsus 2-2. III: femur dorsal 1-1-1, prolateral 2, retrolateral 1; patella 0; tibia ventral distal 2; metatarsus distal 4. IV: femur dorsal 1-1-1, prolateral 1, retrolateral 1; patella 0; tibia ventral 1p-2; metatarsus distal 4. *Palp*: Figs. 1-3.

*Colour in alcohol*: carapace dark reddish brown, with cephalic part blackish. Thin black hairs rather sparsely distributed all over the surface, except a spot of white lanceolate hairs in front of the thoracic groove and a broad stripe on each side of the carapace, from opposite small eyes of second row to posterolateral angle. Some white hairs on outer border of ALE. A row of 10/15 bristles on outer side of cephalic region, from ALE to PLE. Clypeus with several long brown hairs. Chelicerae reddish brown. Abdomen: dorsum surrounded by a stripe of white lanceolate hairs. A central stripe of the same hairs from 1/5 proximal to distal end. Lateral sides of dorsum light brown with four pairs of large dark brown spots, with thin black hairs. Bordering the white stripes on the inside, a narrow stripe of golden iridescent scales. Some of these scales form a short central band at the proximal part of the dorsum. Venter with a broad dark band. First leg reddish brown with distal ends blackish; tarsus yellow. Some white lanceolate hairs over the lighter parts. Other legs light brown, with dark brown markings at distal



Figs. 1-6: *Dendryphantes mordax* (C. L. Koch, 1846). Male holotype: 1-3 palp; 4 chelicera and maxilla. Male No. 7124 MACN; 5 dorsal pattern. Female (holotype of *Evophrys jucunda*): 6 epigynum, cleared, dorsal view. Scale lines = 0.5 mm.

ends and some scattered white hairs. Palps dark brown.

*Female (holotype of Evophrys jucunda). Redescription (Fig. 6)*

*Total length:* 5.80 mm. *Carapace:* 2.93 mm long, 2.17 mm wide, 1.20 mm high. *Ocular quadrangle:* 1.13 mm long, first row 1.65 mm wide, third row 1.87 mm wide. Small eyes of second row closer to ALE than to PLE. *Epigynum:* Fig. 6.

*Female No. 7121 MACN*

*Legs:* 1423. *Spines:* I: femur dorsal 1-1-1, prolateral distal 2; patella 0; tibia ventral 2-2-2; metatarsus 2-2. II: femur dorsal 1-1-1, prolateral distal 2; patella 0; tibia ventral 1r-2; metatarsus 1r-2. III: femur dorsal 1-1, prolateral distal 2, retrolateral distal 1; patella 0; tibia ventral prolateral distal 1; metatarsus distal 4. IV: femur dorsal 1-1-1, retrolateral distal 1; patella 0; tibia ventral 1p-2; metatarsus distal 4. *Chelicerae:* strongly produced. Promargin with two teeth; retromargin with a single tooth.

*Colour in alcohol:* In general like that of male. Carapace with more scattered white hairs and with two small spots instead of the large ones of the male. Clypeus with yellowish white hairs before AME. Abdomen as in male, except that the golden iridescent scales form broader stripes. When the abdomen is enlarged by the eggs, the stripes are evident. Otherwise, the lateral sides of the dorsum appear to be totally covered by these scales. Legs slightly coloured than in the male. Palps light brown.

*Type locality:* Uruguay: Montevideo.

*Distribution:* Uruguay: Montevideo. R. Argentina: Prov. Buenos Aires, Entre Rios and Santa Fe.

*Material examined:* 1 ♂ No. 1666 Holotype of *Hyllus mordax* from Montevideo and 1 ♀ No. 1798 Holotype of *Evophrys jucunda* from Montevideo, deposited in Museum für Naturkunde, Humboldt Universität, Berlin. In Museo Argentino de Ciencias Naturales (MACN), the following specimens: 1 ♀ No. 7121, Buenos Aires, Ruta 3 km 51, col. J. García, 1969; 2 ♀ No. 7122, Entre Ríos, La Paz, col. Cesari, 1974; 1 ♂, 1 ♀ No. 7123, Buenos Aires, Pedro Luro, col. Maury, 1975; 2 ♂, 1 ♀ No. 7124, Santa Fe, Runciman, col. Crespo-Apostol, 1968; 2 ♀ No. 7126, Buenos Aires, Tigre, col. Viana, 1952; 3 ♀ No. 7125, Buenos Aires, Tigre, col. Viana, 1951.

## References

- BONNET, P. 1956-58: *Bibliographia Araneorum* 2 (2,4): 919-1925, 3027-4230. Toulouse.
- KOCH, C. L. 1846: *Die Arachniden* 13: 1-234. Nürnberg.
- KOCH, C. L. 1851: *Übersicht des Arachnidensystems* 5: 1-104. Nürnberg.
- MELLO-LEITÃO, C. 1944: Arañas de la provincia de Buenos Aires. *Revta Mus. La Plata (Zool. N.S.)* 3 (24): 311-393.
- PETRUNKOVITCH, A. 1911: A synonymic Index-Catalogue of Spiders of North, Central and South America with all adjacent islands, Greenland, West Indies, Terra del Fuego, Galapagos, etc. *Bull. Am. Mus. nat. Hist.* 29: 1-790.
- ROEWER, C. F. 1954: *Katalog der Araneae* 2b: 925-1751. Bruxelles.
- SIMON, E. 1897-1903: *Histoire Naturelle des Araignées* 2: 1-1080. Paris